

Flower beds



A fun problem solving activity using spring flowers.

What you will need (per pair)

- A copy of this sheet and the Garden Board sheet. **Please note:** these are A3 documents and need to be printed at 100%
- Numicon 4-, 5- and 6- shapes
- For Extensions: Box of Numicon Shapes

How to raise money

Parents and carers could make a donation to the NSPCC for children taking part.

What to do

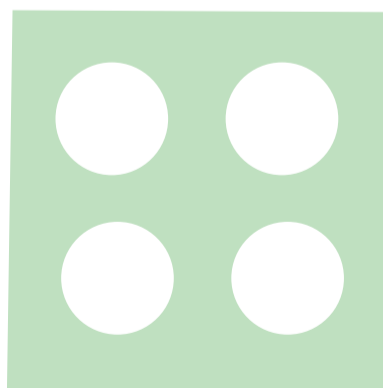
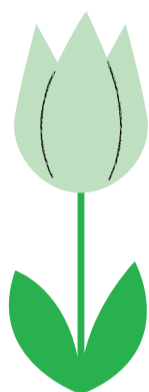
Share these instructions with children:

- In this activity the board sheet is your garden. The white space is your empty flower bed.
- You have light green tulips, red roses and light blue irises.
- Your job is to fill the flower bed by covering the board with just **one** type of flower. You can choose either tulips, roses or irises, using the Numicon Shapes shown.
- Which ones will fit the flower bed perfectly, and which will not?

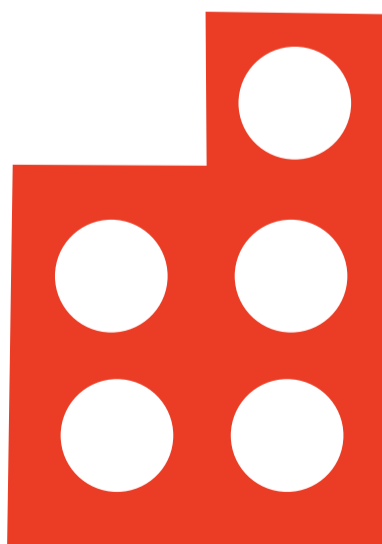
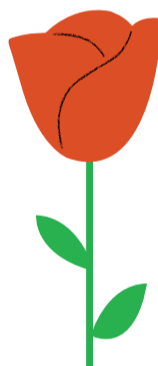
Extensions and questions

- Can you explain what you found out?
- What if you had to use exactly **two** different types of flower; how many ways can you find to do this?
- Make up some new flowers and decide which Numicon Shape they will be. Try to fill the flower bed using these Shapes. Which ones are possible?

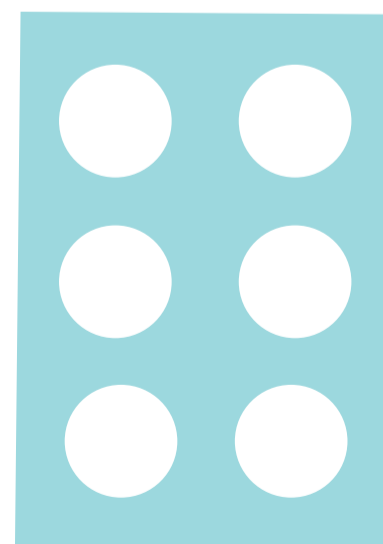
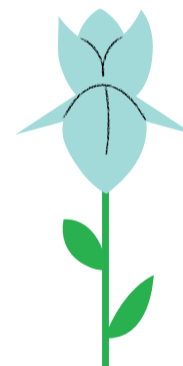
Tulip



Rose



Iris



#numberday

Flower beds



Flower Bed

Lawn

A large grid for a dot-marker activity. The grid is divided into two main sections: 'Flower Bed' on the left and 'Lawn' on the right. The 'Flower Bed' section consists of a 6x6 grid of white circles on a white background. The 'Lawn' section consists of a 6x4 grid of white circles on a green background. The green background is divided into four 3x2 rectangular blocks by a vertical line between the second and third columns and a horizontal line between the third and fourth rows.