

Can you crack the code?

PUPIL'S CIPHER SHEET

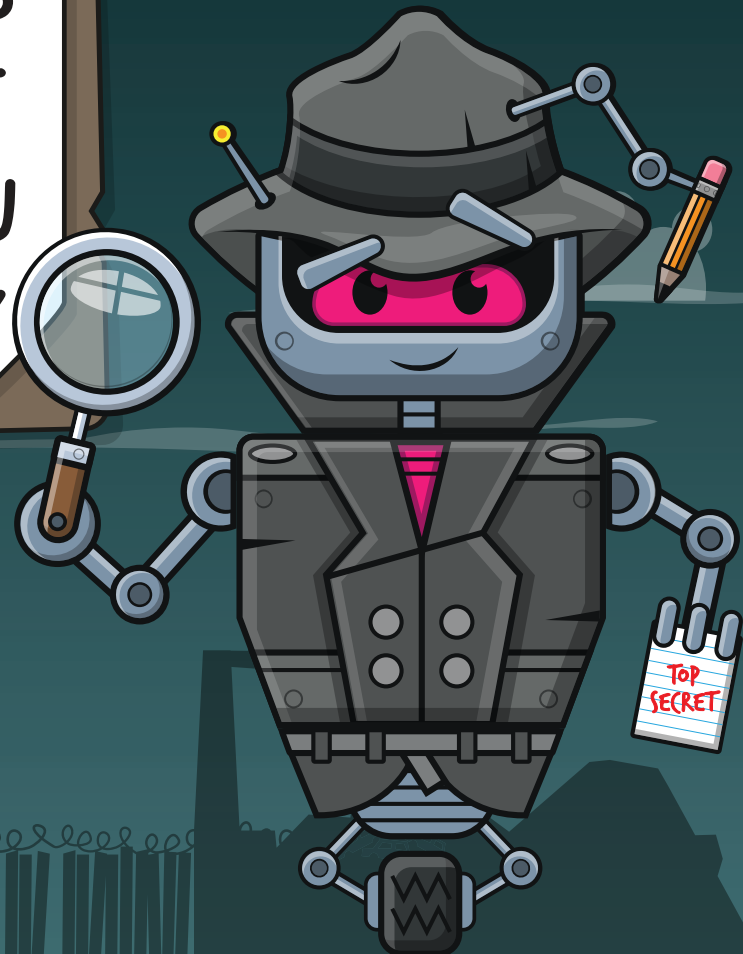


1 = A	8 = M
2 = C	9 = O
3 = E	10 = P
4 = F	11 = S
5 = H	12 = T
6 = I	13 = U
7 = K	14 = Y

Help SpyBot to crack the code

Calculate the missing numbers on the pupil worksheet, then see which letters they represent on this cypher sheet.

Find all the missing letters to reveal an important message!



Tag us online:

#numberday



Can you crack the code?

PUPIL'S WORKSHEET



S

$$9 + \underline{11} = 20$$

$$0 + \underline{\quad} = 10$$

$$\underline{\quad} + 7 = 10$$

$$10 = 9 + \underline{\quad}$$

$$10 - 3 = \underline{\quad}$$

$$\underline{\quad} + 1 = 10$$

$$7 + \underline{\quad} = 20$$

$$20 - 8 = \underline{\quad}$$

$$20 = \underline{\quad} + 9$$

$$20 - \underline{\quad} = 8$$

$$\underline{\quad} = 10 - 9$$

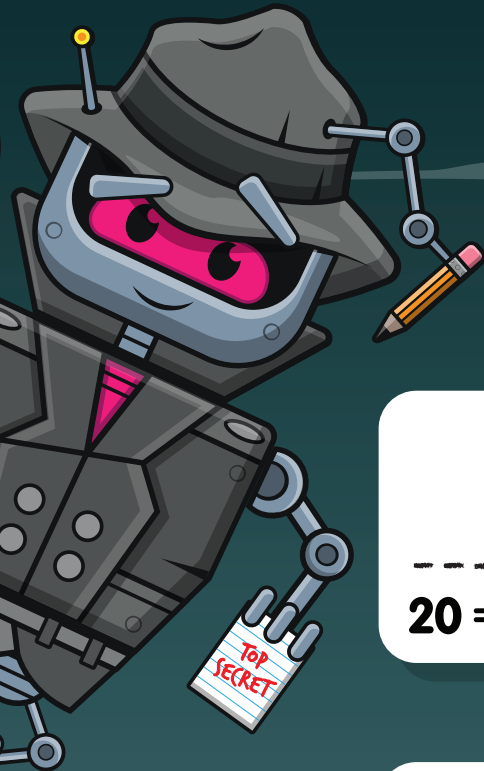
$$\underline{\quad} + 6 = 20$$

$$\underline{\quad} = 20 - 9$$

$$20 = \underline{\quad} + 19$$

$$10 = 6 + \underline{\quad}$$

$$20 - 17 = \underline{\quad}$$



Can you crack the code?

TEACHER'S NOTES



S

$$9 + \underline{11} = 20$$

P

$$0 + \underline{10} = 10$$

E

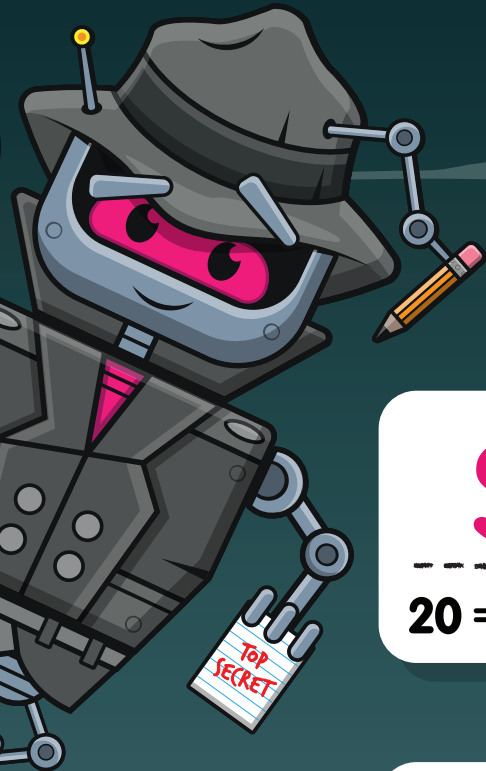
$$\underline{3} + 7 = 10$$

A

$$10 = 9 + \underline{1}$$

K

$$10 - 3 = \underline{7}$$



O

$$\underline{9} + 1 = 10$$

U

$$7 + \underline{13} = 20$$

T

$$20 - 8 = \underline{12}$$

S

$$20 = \underline{11} + 9$$

T

$$20 - \underline{12} = 8$$

A

$$\underline{1} = 10 - 9$$

Y

$$\underline{14} + 6 = 20$$

S

$$\underline{11} = 20 - 9$$

A

$$20 = \underline{1} + 19$$

F

$$10 = 6 + \underline{4}$$

E

$$20 - 17 = \underline{3}$$

